



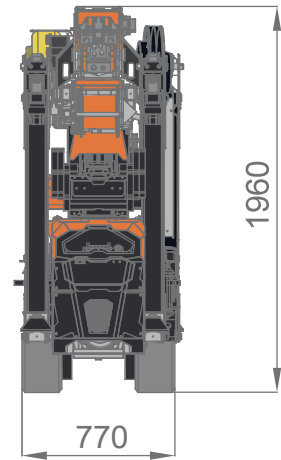
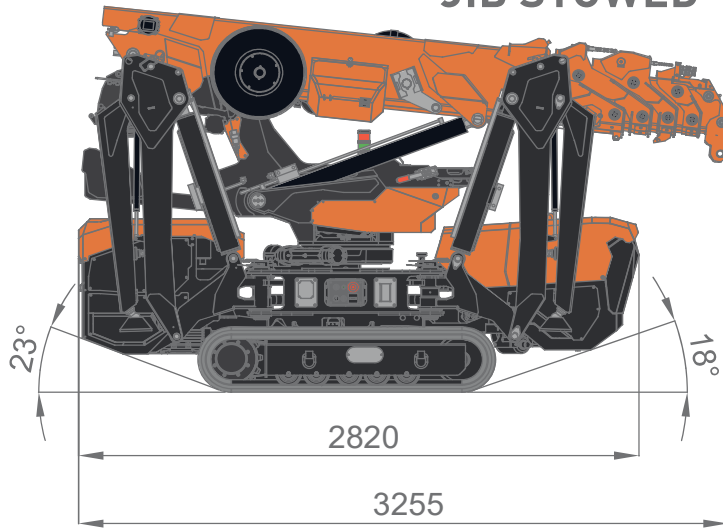
# Technical Data

Specification & Capacities

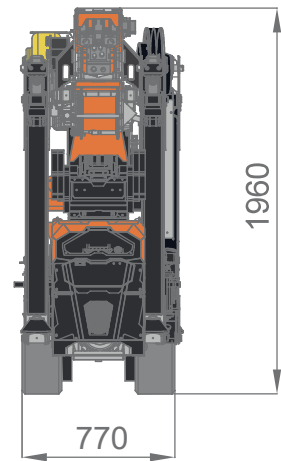
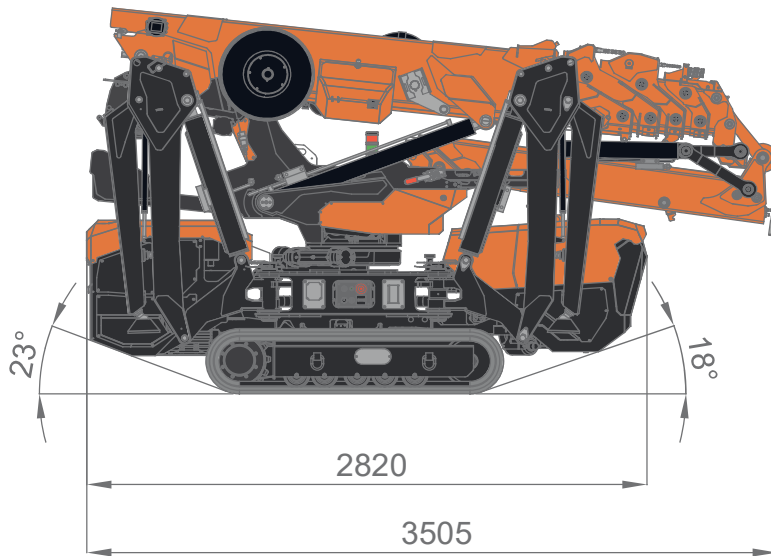
# SPX532

## OVERALL DIMENSIONS

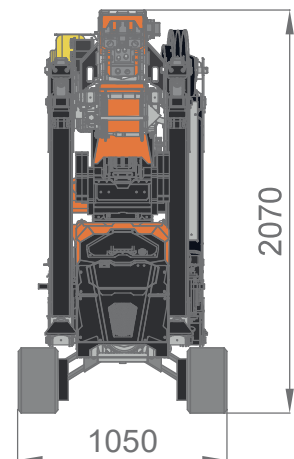
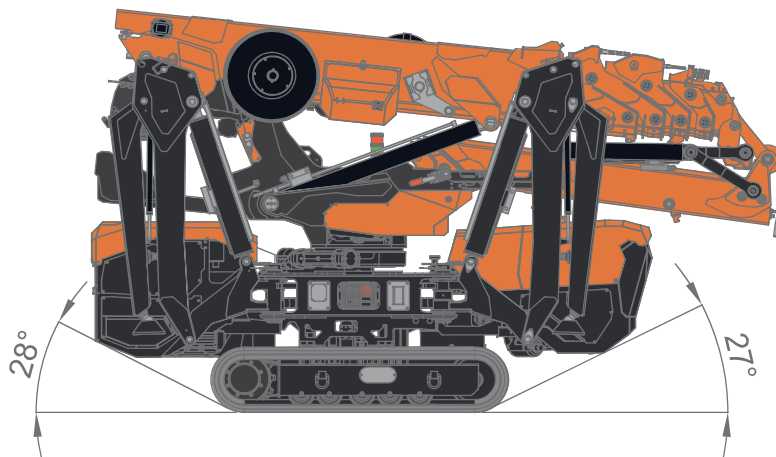
### SPX532CDH JIB STOWED



### JIB MOUNTED

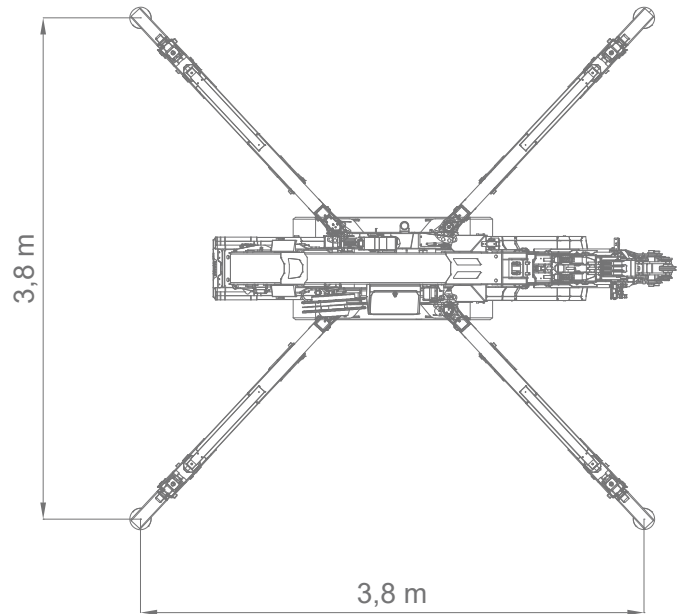
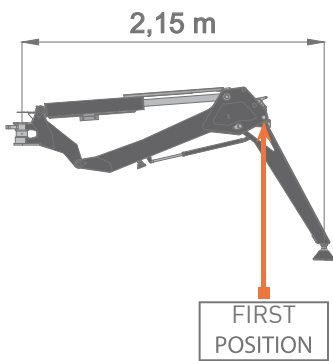


### EXTENDED TRACKS

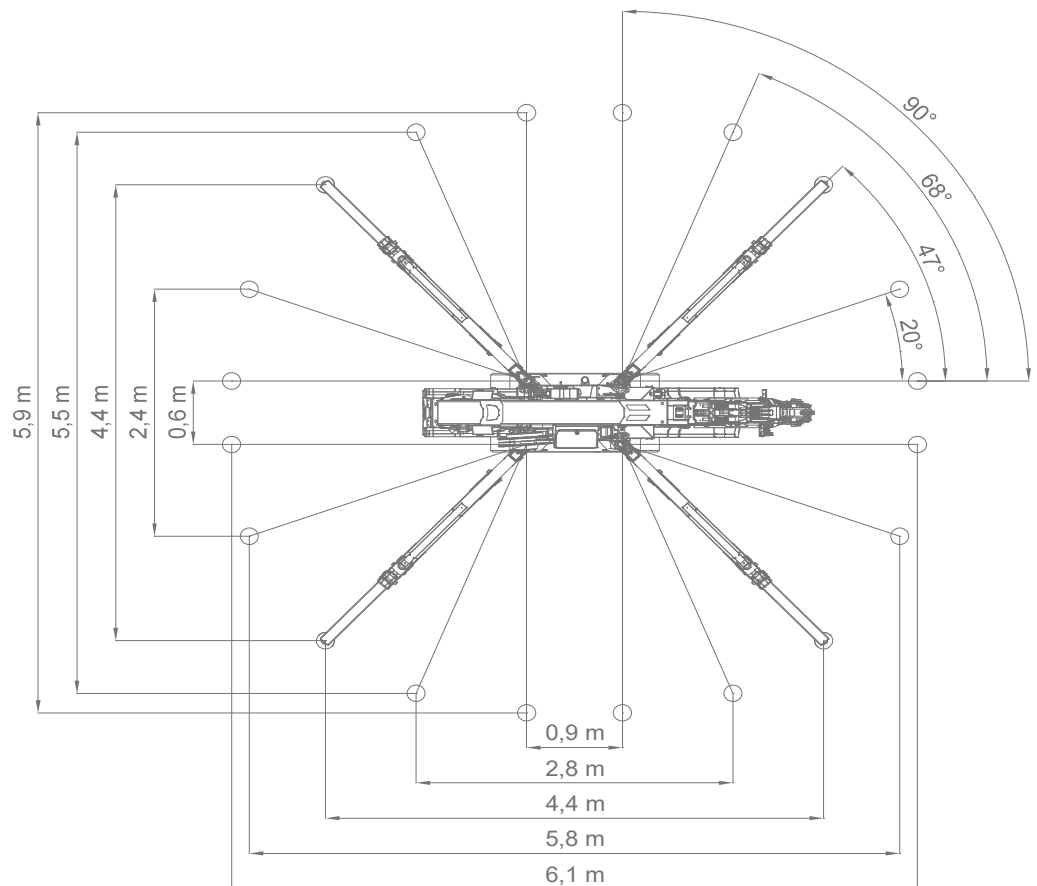
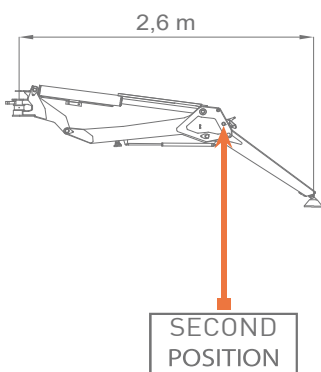


[mm]

## OVERALL DIMENSIONS SQUARE OUTFRIGGER 1<sup>ST</sup> POSITION STABILITY



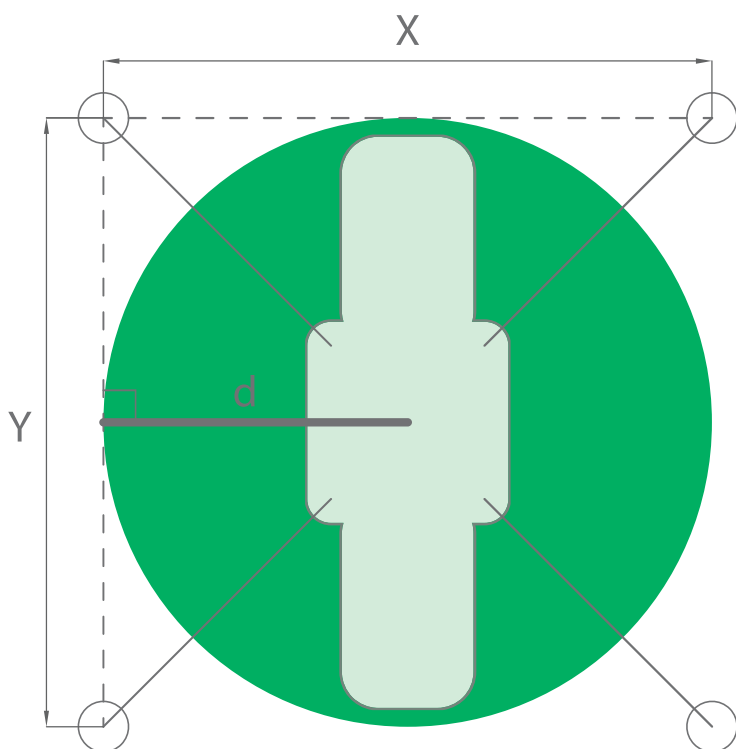
## OUTRIGGER 2<sup>ND</sup> POSITION FULL STABILITY



## CRANE PERFORMANCE

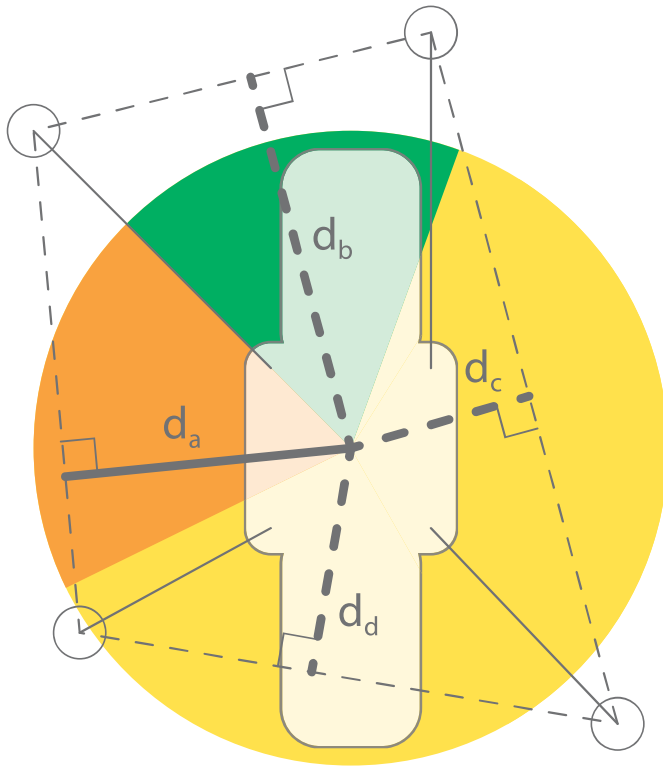
		d			
		1,1 m	1,8 m	2,2m	
<b>CRANE PERFORMANCE</b>	J7				
	J6				
	J5				
	J4				
	J3				
	J2				
	J1	PICK & CARRY			
	J0	No LIFTING CAPACITY			
			2,2 x 2,2 m	3,6 x 3,6 m	4,4 x 4,4 m
	<b>STABILITY AREA</b>				

### STABILITY EXAMPLES



Example 1:  
Square stability area.

$X = 4,4 \text{ m}$   
 $Y = 4,4 \text{ m}$   
 $d = 2,2 \text{ m}$



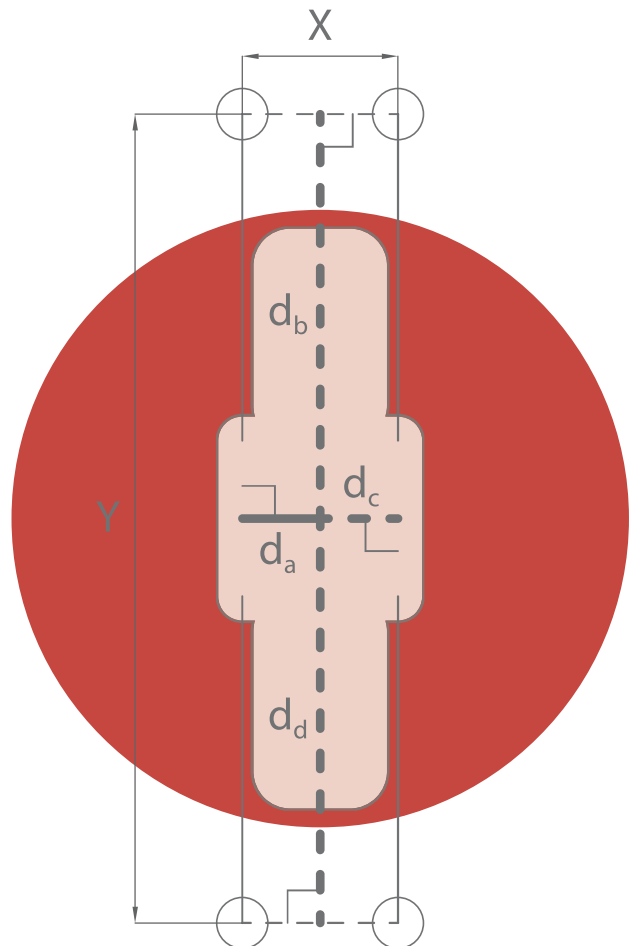
Example 2:  
Asymmetric stability area.

$d_a = 1,9 \text{ m}$   
 $d_b = 2,2 \text{ m}$   
 $d_c = 1,3 \text{ m}$   
 $d_d = 1,3 \text{ m}$

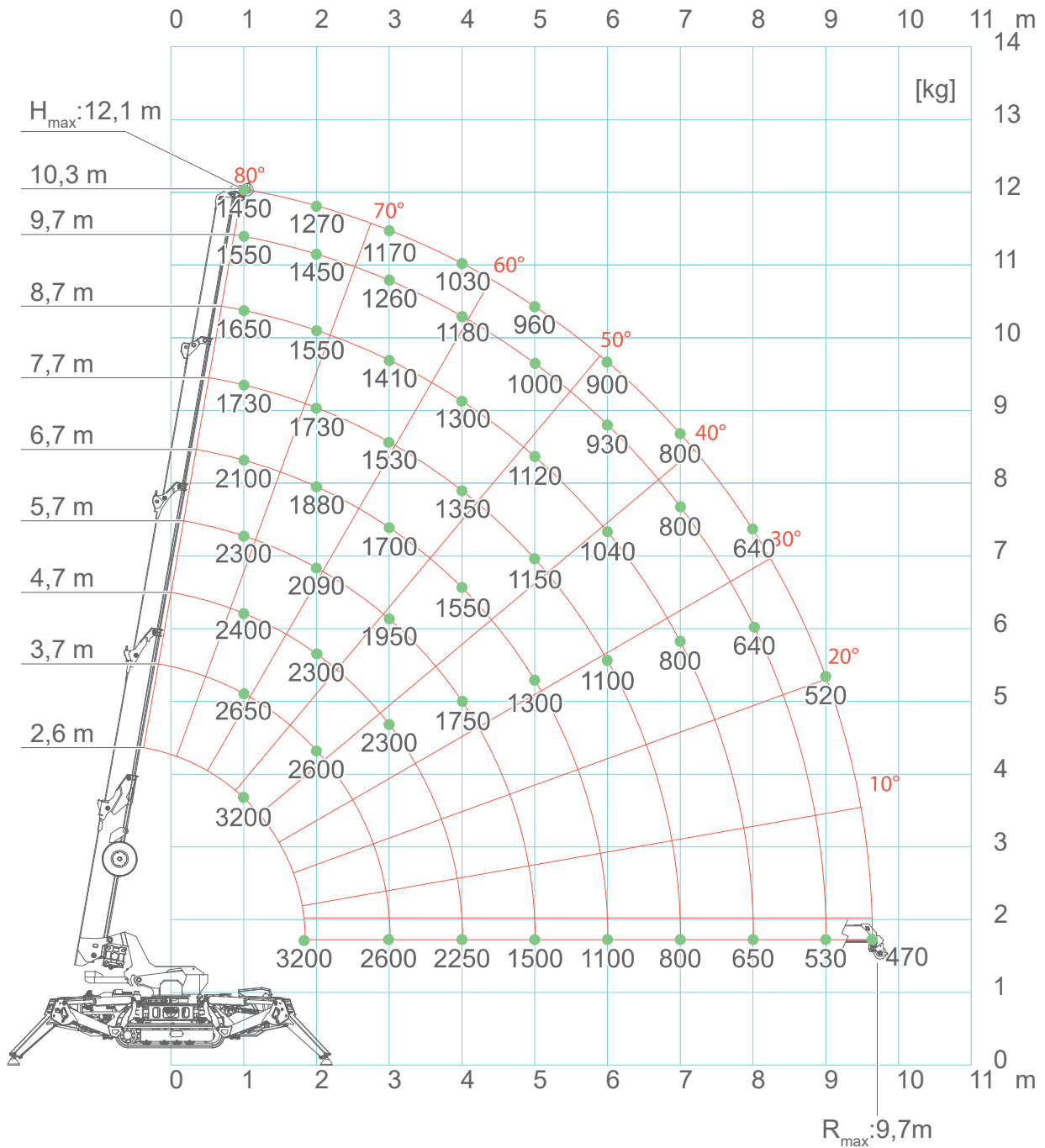
Example 3:  
Close outriggers stability area.

$X = 0,6 \text{ m}$   
 $Y = 5,0 \text{ m}$   
 $d_a = 0,3 \text{ m}$   
 $d_b = 2,5 \text{ m}$   
 $d_c = 0,3 \text{ m}$   
 $d_d = 2,5 \text{ m}$

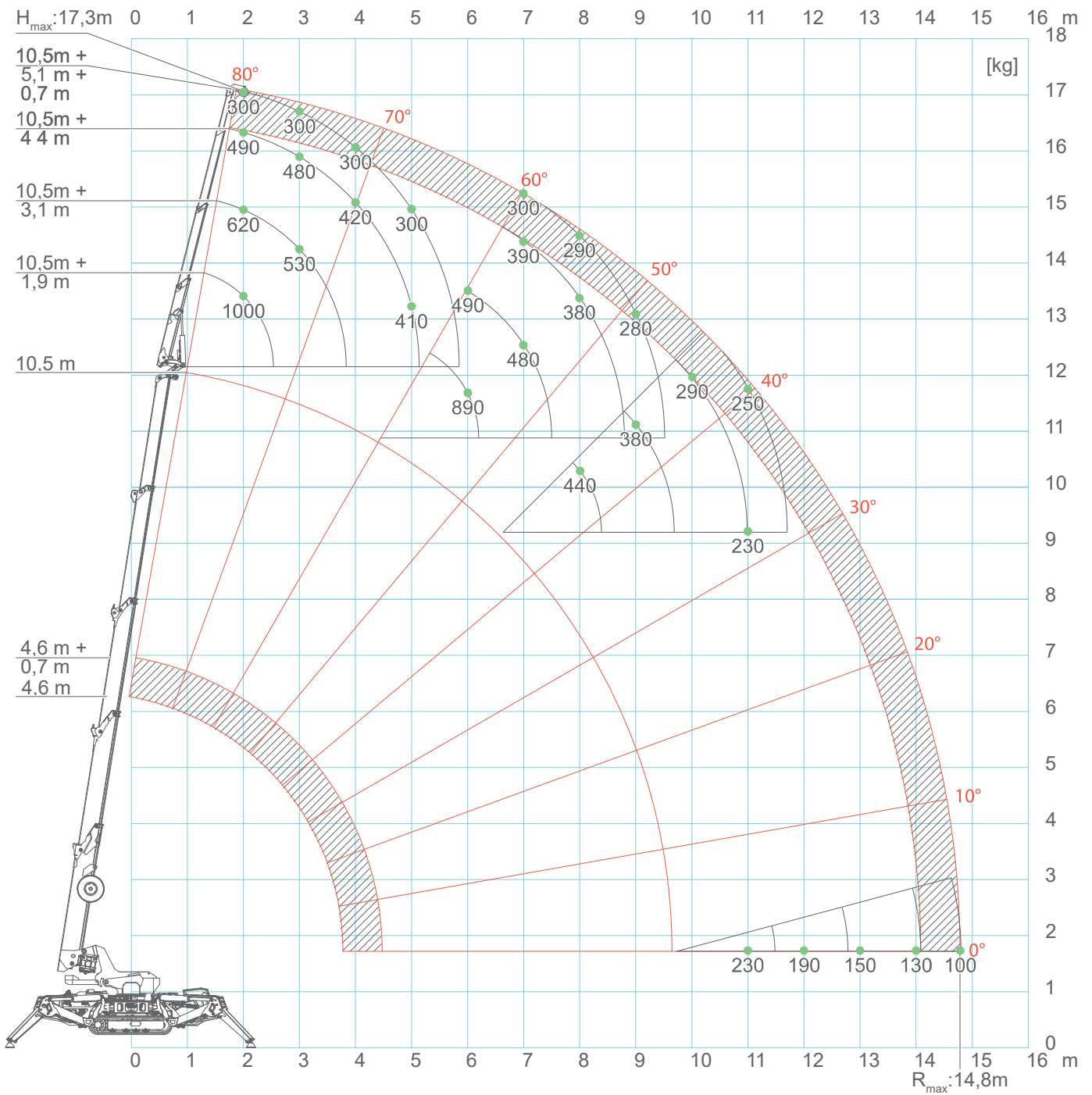
$d_b$  and  $d_d$  should be J7 geometrically but is limited to J0 anyway because too narrow.



## SPX532 - MAIN BOOM



## SPX532 - JIB1000.2H1MX



\*: Refers to hook configuration. Pulley configuration is 0,1m longer.